



# SERVICE BULLETIN SB0010

**Cub Crafters, Inc. Considers Compliance Mandatory** August 25, 2009

The parts of this Service Bulletin that change the Type Design of the aircraft have been approved by the FAA.

**EFFECTIVE DATE:** THIS SERVICE BULLETIN IS EFFECTIVE August 25, 2009

**SUBJECT:** Exhaust Shroud Clearance to Engine Frame

**MODELS AFFECTED:** CC18-180A SERIAL NUMBER 0001  
CC18-180 SERIAL NUMBERS 0002 THROUGH 0035

**COMPLIANCE TIME:** AT THE NEXT MAINTENANCE ACTION

**PURPOSE:** Cub Crafters, Inc. has had an instance of engine mount chaffing due to a hose clamp located on the exhaust shroud on the left rear side of the engine. Proper re-assembly and adjustment is required for installation. If clearance is unobtainable, a new revision of the exhaust shroud is available that provides more clearance. This Service Bulletin requires that the engine mount and exhaust shroud be inspected and addressed by adjustment or replacement if inadequate clearance exists.

**PARTS LIST:**  
**(If Required)**

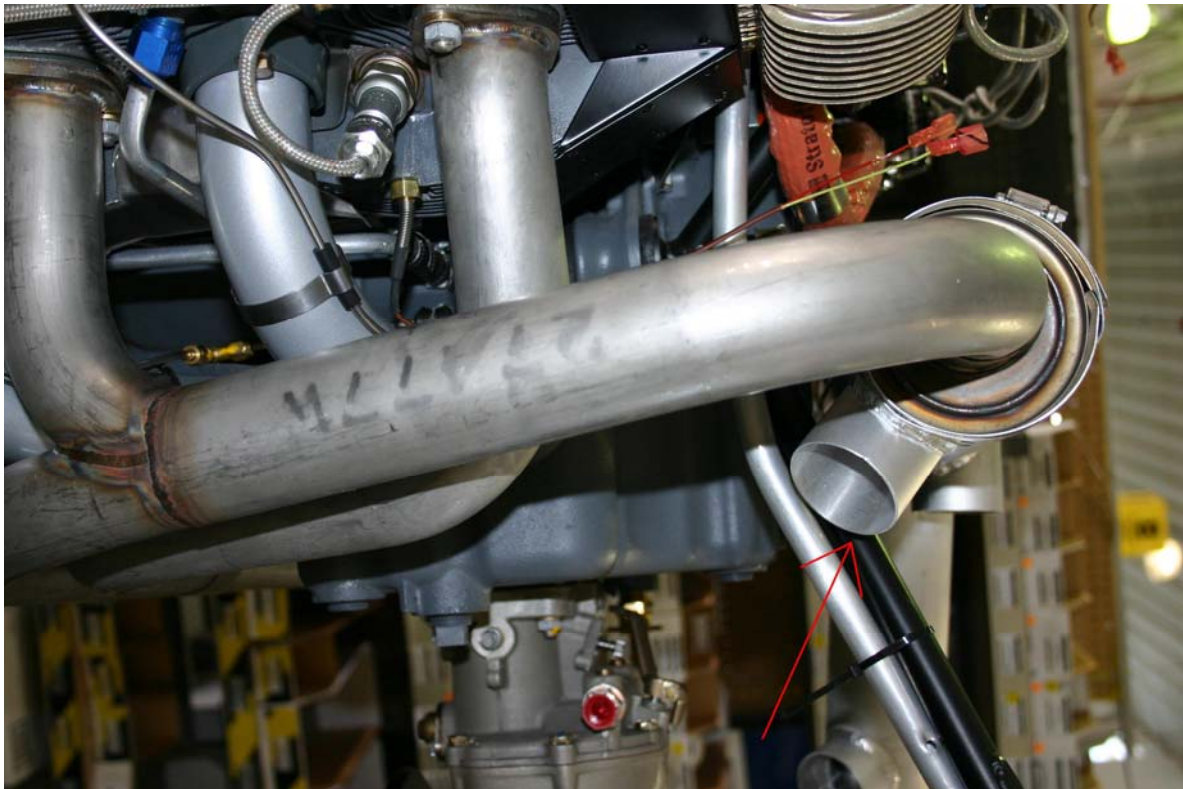
<u>PART</u>	<u>DESCRIPTION</u>	<u>QTY</u>
TC5305-001	New Head Shroud	1

**INSTRUCTIONS:**

1. Open left side cowling and inspect the area near the cabin heat port on the exhaust shroud and the area of the engine frame for chaffing or damage. Removal of SCAT tubing and hose clamp may be required.
2. If no damage or problems are noted, there is no further action required. As described in the Aircraft Maintenance Manual TC10000AMM Section 05-20, normal inspections should always include inspection for any damage to the exhaust shroud, system, or engine frame.
3. If less than .25" clearance between the exhaust shroud and the engine mount tube is noted, determine if adjustment can be made to increase the clearance. If you are unable to get adequate clearance or the shroud is damaged and in need of replacement, contact Cub Crafters for a replacement that provides for additional clearance in the area. If damage is noted to the engine frame, contact Cub Crafters.

Document Title	Document No	Page
Service Bulletin SB0010 Exhaust Shroud Clearance to Engine Frame	SB0010	1 of 3

**Cub Crafters, Inc. Considers Compliance Mandatory** August 25, 2009  
 The parts of this Service Bulletin that change the Type Design of the aircraft have been approved by the FAA.



**FIGURE 1 –Left Side of Engine-Area in question at the mid-right side of photo, engine frame and exhaust shroud outlet**

4. When reinstalling the heat shroud (as part of normal annual inspections, this heat shroud is to be removed and inspected as per the Aircraft Maintenance Manual TC10000AMM Section 05-20) care should be taken to locate the exhaust shroud in the proper left-right position and the proper rotational alignment to give as much clearance as possible with the cabin heat outlet and the engine frame. Slide the assembly left-right to center between the exhaust pipes, but also ensure the outlet has .25” or greater clearance to the engine tube.

CubCrafters, Inc		1918 South 16 <sup>th</sup> Ave, Yakima WA 98903	
Document Title		Document No	Page
Service Bulletin SB0010 Exhaust Shroud Clearance to Engine Frame		SB0010	2 of 3

**Cub Crafters, Inc. Considers Compliance Mandatory** August 25, 2009  
 The parts of this Service Bulletin that change the Type Design of the aircraft have been approved by the FAA.



**FIGURE 2 – Close View of Clearance Required**

5. After installing the hose clamp over the SCAT tubing, ensure the adjustment portion of the hose clamp is not in close proximity to the engine frame.

If you are no longer in possession of this aircraft, please forward this information to the present owner/operator and notify Cub Crafters, Inc. of the address of the current owner to:

Cub Crafters, Inc.  
 1918 S. 16<sup>th</sup> Avenue  
 Yakima, WA 98903.  
 1-877-484-7865 or 1-509-248-9491 or [support@cubcrafters.com](mailto:support@cubcrafters.com)

Please include the aircraft registration number, serial number, current name, and address of the owner and/or operator.

CubCrafters, Inc		1918 South 16 <sup>th</sup> Ave, Yakima WA 98903	
Document Title		Document No	Page
Service Bulletin SB0010 Exhaust Shroud Clearance to Engine Frame		SB0010	3 of 3