



Cub Crafters, Inc. Considers Compliance Mandatory

EFFECTIVE DATE: This SERVICE BULLETIN is effective **February 14, 2008**

SUBJECT: Exhaust Stacks and Mufflers

MODELS AFFECTED: CC11-100 S/N CC11-00001 THRU CC11-00047.

COMPLIANCE TIME: PRIOR TO NEXT FLIGHT

CONTINUED INSPECTION: Inspect every 50 hrs or at every subsequent Condition Inspection, whichever occurs first.

PURPOSE: Inspect exhaust stacks and mufflers for wear

INSTRUCTIONS: **INSPECT EXHAUST STACKS AND MUFFLERS**

Procedure to inspect exhaust stacks:

1. Remove cowling.
2. Inspect exhaust stack for wear at bulkheads of both cabin and carb heat mufflers. If vibration is present, the bulkhead may wear a groove around circumference of stack. (See Figure 1)
3. If evidence of wear exists, measure the depth. Serviceable limits are less than .010" of wear. If the stack is only polished, that is acceptable. If the bulkhead is wearing a groove in the stack, that is unacceptable and out of limits.
4. If wear is out of serviceable limits, contact Cub Crafters and return exhaust for repair or Exhaust Muffler Retrofit. Parts out of serviceable limits will be covered under warranty.
5. If wear is within serviceable limits, perform continued inspections.

Procedure to inspect exhaust mufflers:

1. Inspect exhaust mufflers for loose rivets and cracks.
2. If loose rivets or cracks are found, mufflers must either be repaired or replaced.
3. Repairs may be made to existing mufflers by replacing loose rivets with same size or oversized steel rivets. Single cracks (up to three per muffler) equal to or less than 1" in length may be stop-drilled.
4. If mufflers are out of these limits, they must be returned to Cub Crafters and replaced with Exhaust Muffler Retrofit. Parts out of serviceable limits will be covered under warranty.

Cub Crafters, Inc. Considers Compliance Mandatory

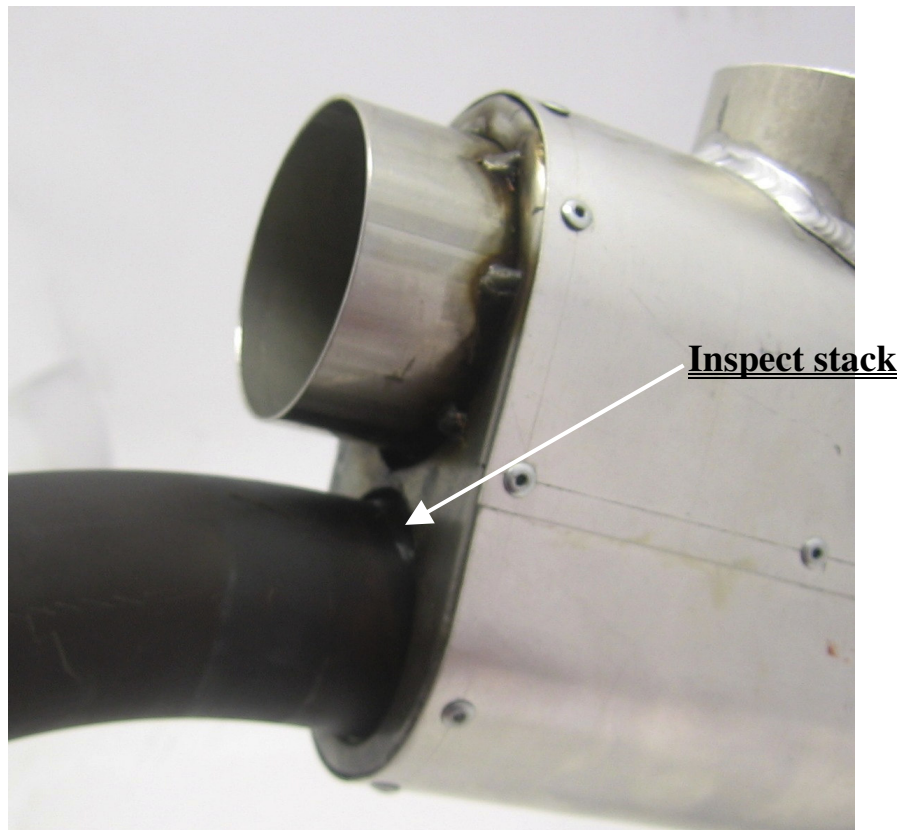


Figure 1