

Figure FS11

SECTION 8 BAGGAGE SIDE PANEL FITTING

Place the rear baggage compartment tray (SC90001-001) that you worked on earlier. Then, test fit the side panels SC90004-001 to the aft baggage compartment.

The forward edge of the side panels should be flush with the aft side window frame.



Photo 048

The top edge of the side panel should meet the centerline of the top fuselage tube.



Photo 049

Ensure top corners of the aft cargo compartment will not interfere with the fabric. Use a die grinder as needed to ensure clearance.



Photo 050

Use shears to trim any extra material. Once trimmed, smooth any sharp edges (using a file, ScotchBrite, etc). Don't worry about fastening these panels right now. Hold them in place with some masking tape. The panels will be fastened after the next section.

SECTION 9 STRINGERS

In this section we are going to place the stringers identified in Figure FS12. Using the measurements shown in the following pictures, position the stringers. Left side position measurements are shown. The right side positions are to be the same as the left. Use your 3-inch spring clamps to hold the stringers in place. Ensure that all of the stringer tabs are located over a tube. Once all stringers are in place, use a contrasting marker (silver or white) or masking tape to identify the location at each tube crossing.

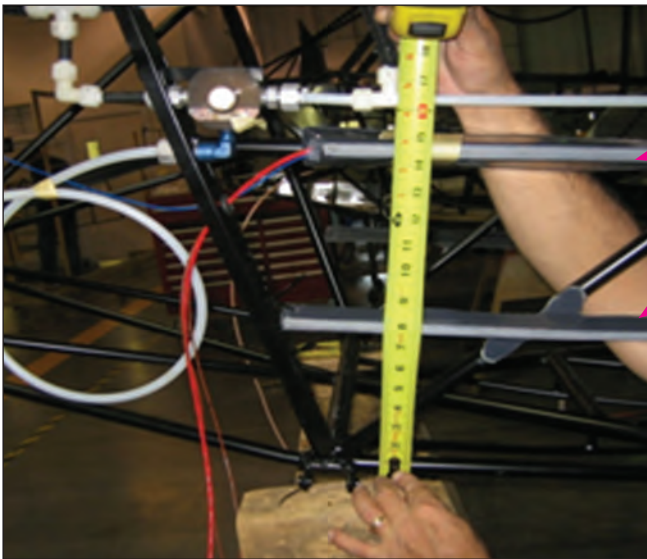


Photo 051

Picture #051 is taken near the fuel selector

This is SC83101-001 14½ inches

This is SC83106-001 7 5/8 inches

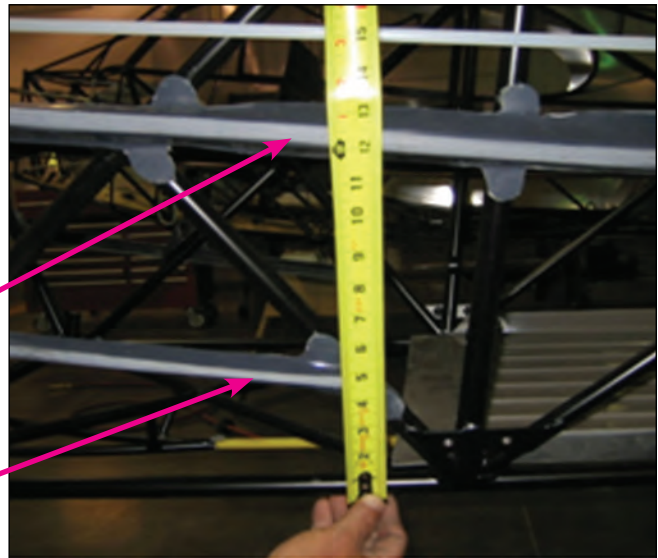


Photo 052

Picture #052 is near the leading edge

of the lower baggage tray

This is SC83101-001 12 3/8 inches

This is This is SC83106-001 4¾ inches

Picture #053 is near the aft side
of the lower baggage tray.

This is SC83101-001 10 3/8 inches

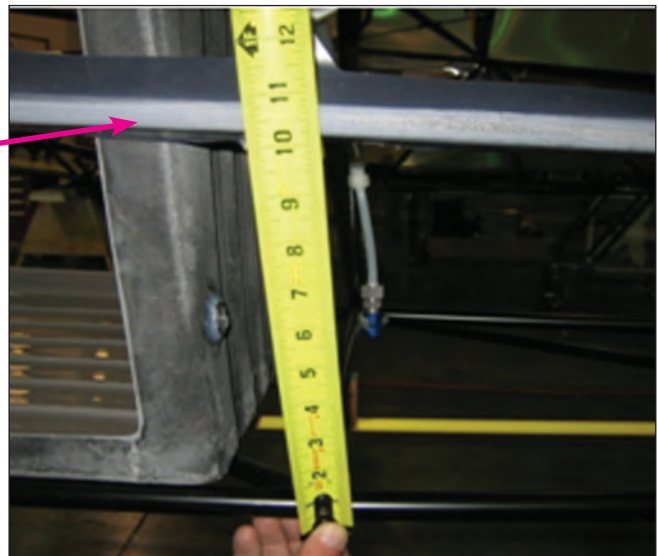


Photo 053

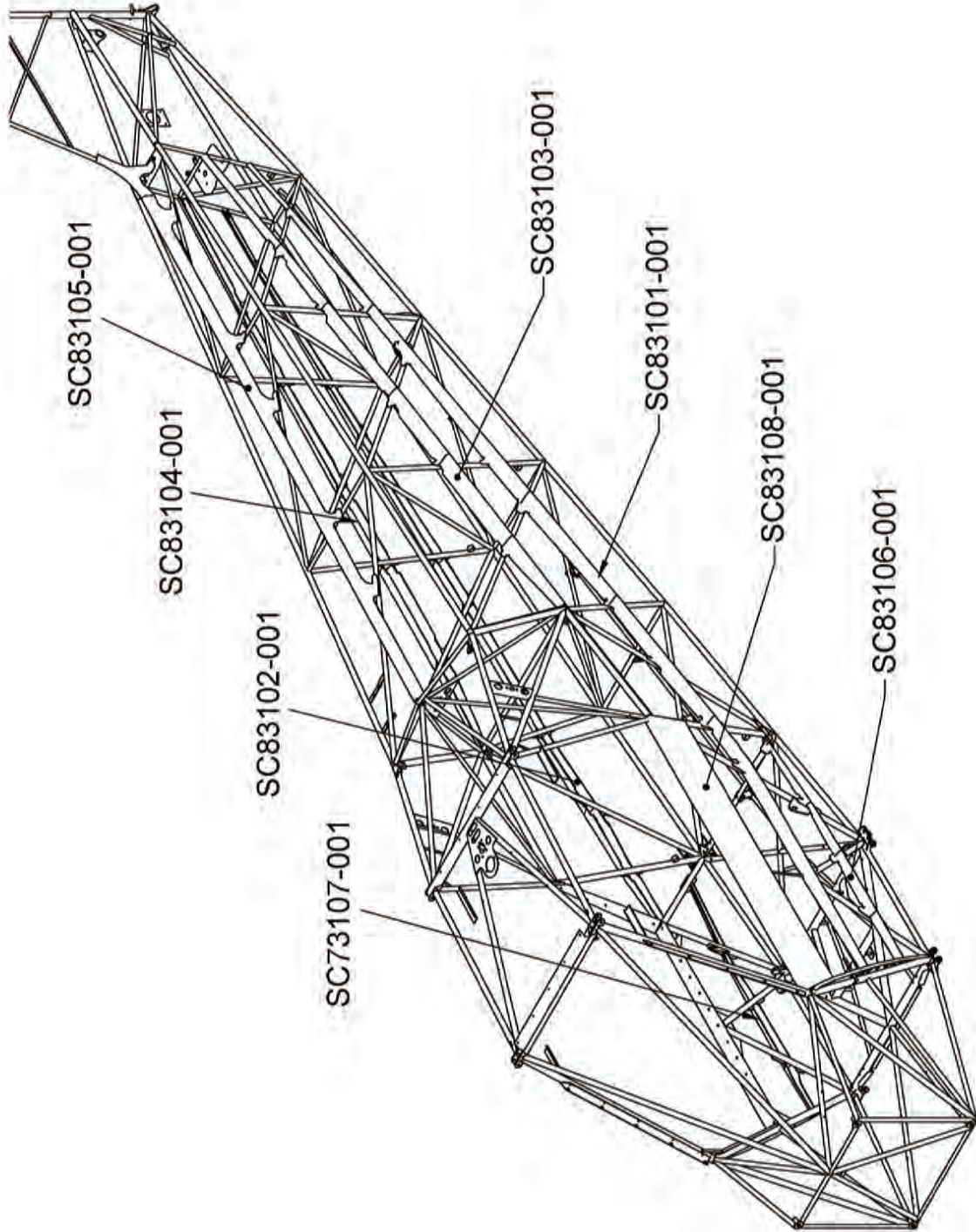


Figure FS12



Sand the aft end of stringer to allow a smooth transition to the fuselage. To achieve this you will need to sand the inside of stringer as shown in photo 054 & 055.

Photo 054



Photo 055

Use an air nozzle to remove all the loose particles and dust from the stringers.

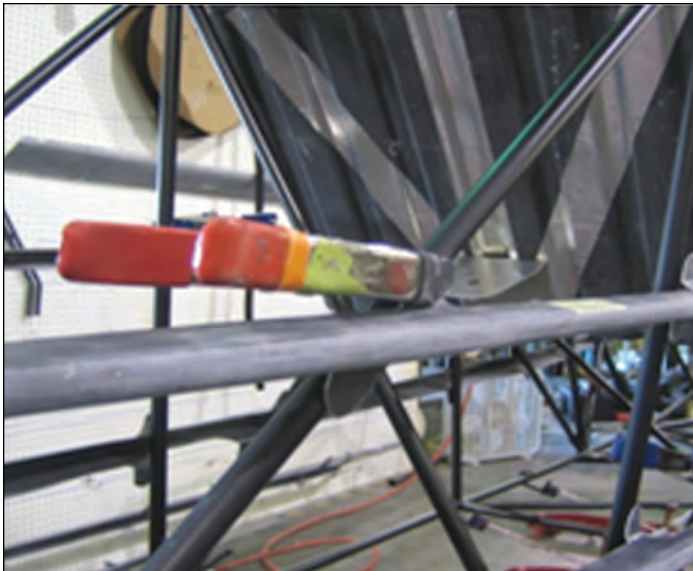
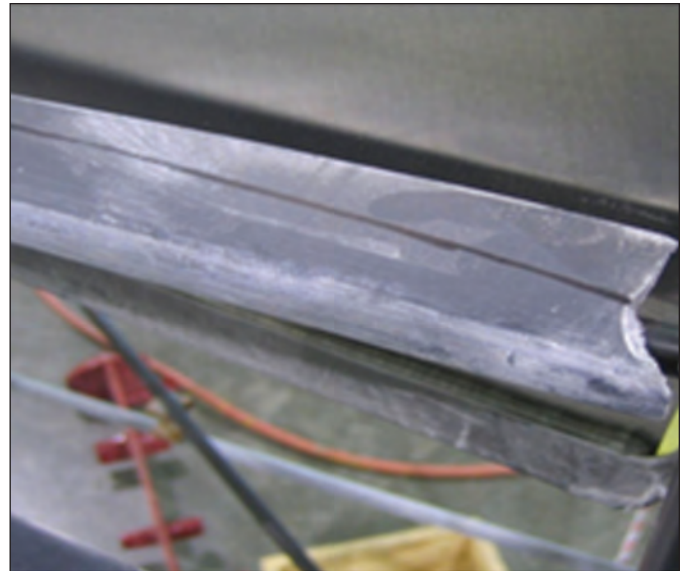


Photo 056

Use a ScotchBrite pad to roughen the surface wherever the stringers will be glued to the fuselage tubes. Methacrylate adhesive will not adhere well to a smooth glossy surface. If the stringer spans from a horizontal start tube to a horizontal start tube, make sure the stringer is straight between the tubes.

*Photo 057*

With the stringers in their proper locations on the tubes mark any area that will need to be trimmed for proper fit.

*Photo 058**Photo 059*

Apply Methacrylate to the inside of the 4 stringers at the aft mounting tubes. Be sure that you use enough Methacrylate to embed the tube in the stringer. Use masking tape to hold the stringers in place.

Moving down each stringer, pull each pair of stringer tabs away from fuselage and apply Methacrylate. Press the tab, the Methacrylate and the tube together. Use a rag or paper towel to wipe away any excess. Use masking tape and/or spring clamps as needed to secure the tabs while the Methacrylate cures. Keep the Methacrylate at hand as you'll be using it in the next section.

There is a happy amount of pressure between the stringers and the tubes. If there is too little the tabs will not stick to the tubes. Too much pressure on the tabs will cause the stringers to bow. Be sure that the stringers are straight and/or have proper curves.

The stringers form the exterior shape of the Carbon Cub fuselage. You are trying to achieve smooth transitions between the tubes and the stringers. As such, any unusual curvature in the stringers will be undesirable, as it will show later.

You may notice that there is a top stringer that was not addressed in this step. We'll install the top stringer later.

**Photo 060****Photo 061****Photo 062****Photo 063****Photo 064**

LOG AND INSPECTION SHEET FUSELAGE#3

Log sheet

	FABRICATION AND ASSEMBLY TASKS	A	B	C	D
		Mfr Kit/Part/ Component	Commercial Assistance	Am-Builder Assembly	Am-Builder Fabrication
	Wings - 24 Listed Tasks				
	Task #				
F2	Fabricate Composite Cores or Shells, Skins				X
F3	Fabricate Bulkheads or Crossmembers	X.5			X .5
F9	Fabricate Brackets and Fittings	X			
F10	Assemble Brackets and Fittings			X	

Inspection point

	INSPECTION ITEMS	BUILDER	ALTERNATE
1.6	Top center stringer: forward end that is over rear baggage compartment should be painted flat black. Ensure stringer is secure and straight.		
1.7	Left upper front stringer: ensure installed and secure correctly.		
1.8	Left lower front stringer: ensure straight and secure at all attach points.		
1.9	Left upper side stringer: ensure straight and secure at all attach points.		
1.10	Left lower side stringer: ensure straight and secure at all attach points.		
1.11	Bottom center stringer: ensure all Phenolic blocks are secure. Aft elevator		
1.12	pulley block installed with hardware per drawing. Ensure stringer is straight and secure.		
1.13	Right side top stringer: ensure straight and secure at all attach points.		
1.14	Right side middle stringer: ensure straight and secure at all attach points.		
	Right side bottom stringer: ensure straight and secure at all attach points.		